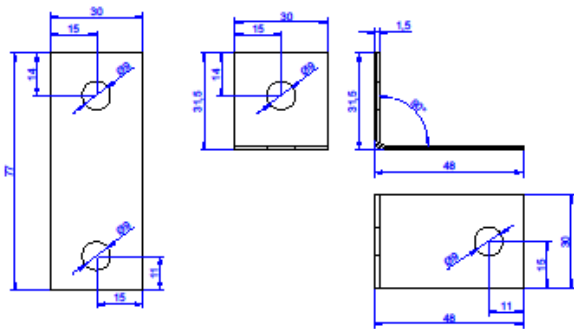


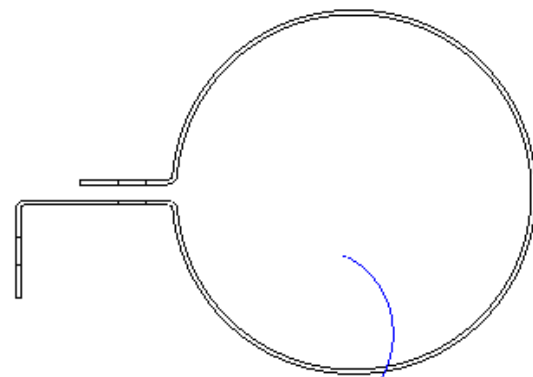
Wall Mount Waste Pipe Support Bracket Technical Specification



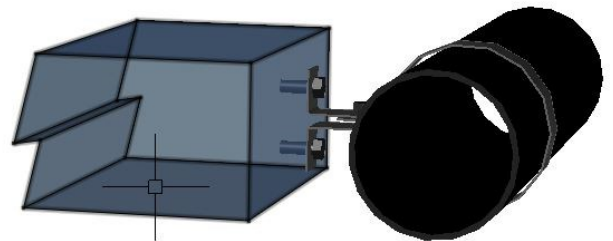
Each kit includes:
 1 x 1.5mm 90 Degree Bent Plate
 1 x 1.5mm GP Std 110 pipe bracket
 3 x 30mm M8 BZP Bolt
 3 x M8 BZP Nuts
 NB Components are supplied None Assembled

All components are manufactured from
 Pre-galvanised Mild Steel BS EN 10346:2009 DX51D
 or Mild Steel / Zinc Plated BS EN ISO898 / ISO4042

Pipe brackets should be spaced 900-1000mm apart allowing for a constant gradient as recommended by NHBC Technical Services



GP Std 110 1.5mm Galv Pipe Bracket



Please note the wall mount bracket is not supplied with wall fixing screws or bolts. Clearance holes for M8 fixings are provided in the component that should allow for ease of installation as required. Design for the fix of 110mm waste pipe or similar diameter services.

Should your application require higher corrosive protection this product can be supplied in stainless steel.

Gordon Products Ltd - Developing & Manufacturing Metal Components since 1965

Wire Forms

Forming & Pressing

Welding

Laser Cutting

Paint & Coatings



For more information check out our website at www.gordonproducts.co.uk